

MONTHLY MEMBERSHIP PROGRESS REPORT

District A 15

Results as of: 3/31/2024

GMT:

LOCATION ONTARIO

GMT CA

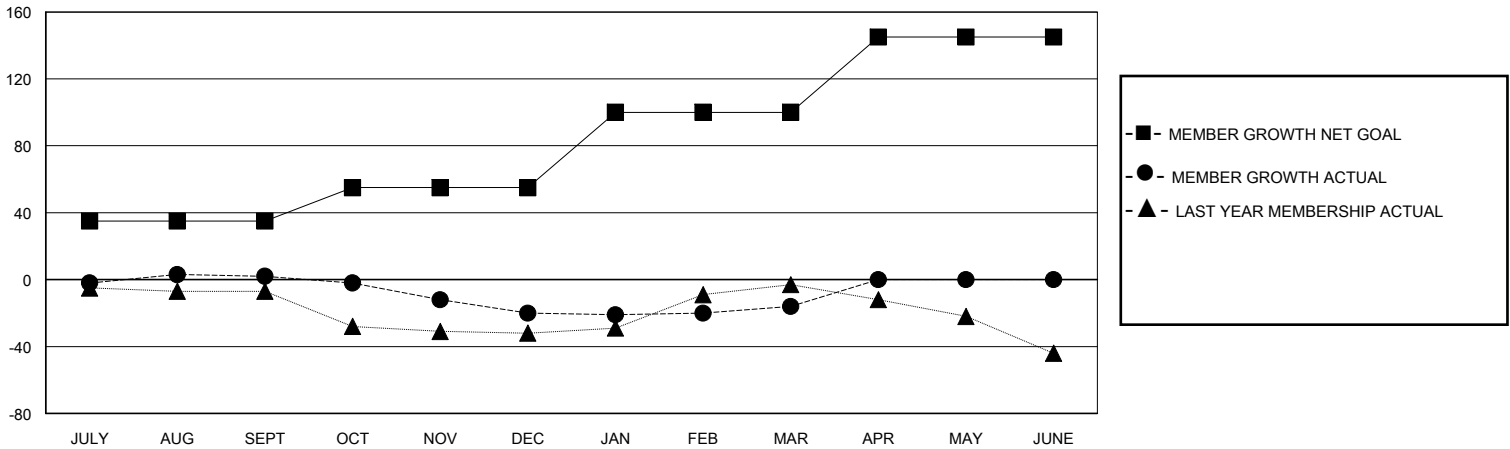
Clubs			
RESULTS FOR 2023-2024			
QUARTER	NEW CLUB GOAL	NEW CLUBS	DROPPED CLUBS
JULY/AUG/SEPT	0	0	0
OCT/NOV/DEC	1	0	0
JAN/FEB/MAR	0	0	0
APR/MAY/JUNE	0	0	0

Members			
RESULTS FOR 2023-2024			
QUARTER	MEMBER GROWTH NET GOAL	MEMBER GROWTH ACTUAL	DROPPED MEMBERS ACTUAL (including transfers)
JULY/AUG/SEPT	35	25	17
OCT/NOV/DEC	20	41	57
JAN/FEB/MAR	45	25	20
APR/MAY/JUNE	45	0	0

GOALS AND ACTUAL NEW CLUBS CUMULATIVE



GOALS AND ACTUAL MEMBERS CUMULATIVE



DROPPED CLUBS: 0	32 CLUBS OF 57 ADDED 1 OR MORE NEW MEMBERS	<u>GENDER DISTRIBUTION</u>	
<u>DROPPED MEMBERS</u>		MALE	939 (70.98%)
DECEASED	23	FEMALE	384 (29.02%)
CLUB CANCELLED	0	TOTAL FAMILY UNIT MEMBERS	
OTHER	71	172	
TOTAL	94	FAMILY MEMBERS PAYING HALF DUES	
		88	

[CLICK HERE FOR CUMULATIVE MEMBERSHIP DATA](#)